





naturfit®
one-piece stoma pouch
www.opus-healthcare.co.uk

 Alliance Pharmaceuticals Limited,
Avonbridge House, Bath Road, Chippenham,
Wiltshire, SN15 2BB, UK
(T/A Opus Healthcare).

 Alliance Pharma (Ireland) Ltd
United Drug House, Magna Drive,
Dublin, D24 X0CT, Ireland

naturfit and associated devices are trade marks of
Alliance Pharmaceuticals Limited

© Alliance Pharmaceuticals Limited 2023

 www.alliancepharmaceuticals.com



Indication

The ostomy bag is intended to collect output from a stoma. The bag can be changed by the user or a trained nurse. The adhesive is intended to fix the bag and adhere to intact skin around the stoma.

Information

Store product horizontally under cool and dry conditions - do not freeze.

Allow product to return to room temperature before application. Opus Healthcare accepts no liability for any injury or loss that may arise if this product is used in a manner contrary to Opus Healthcare's current recommendations.

Caution

Consult your healthcare professional before you start using a product.

Warning

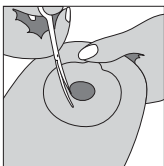
Re-use of the single use product may create potential harm to the user. Reprocessing, washing, disinfection, and/or sterilisation may compromise product characteristics, causing additional risk of physical harm to or infection of user.

Report any safety concerns to Alliance Pharmaceuticals Limited
(tel.: +44 (0)1249 466 966 email: pharmacovigilance@alliancepharma.co.uk)

Filter stickers have been included in the box (Colostomy/Ileostomy pouches) and can be used to protect the filter when bathing/showering, or to help prevent pancaking. If required a filter sticker can be applied by lifting up the split fabric pouch cover and placing over the small hole on the filter.

How to use

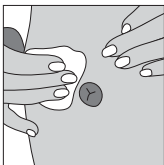
Preparation



Cut a hole in the baseplate to fit the exact size and shape of the stoma using a pair of small curved scissors and the cutting guide on the baseplate.

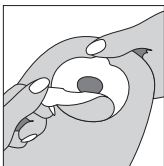
You can use the enclosed stoma measuring guide to measure the size and shape of the stoma.

An exact fit between the hole and the stoma is important to reduce the risk of leakage and skin problems.

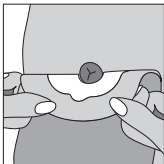


Thoroughly clean the stoma and the surrounding skin area with warm water and a washcloth. Be gentle when cleaning around the stoma. The skin must be completely dry before application of any adhesive or new bagging system.

Application



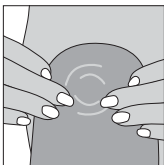
Peel off the protective film from the baseplate.



Position the stoma at the centre of the hole and press it firmly onto the skin.

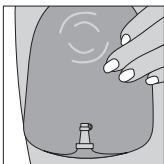
The baseplate must fit snugly around the stoma. It is important to ensure a tight seal around the stoma.

Smooth the adhesive down, starting from the stoma and moving outwards to the edges, to ensure that the adhesive has made full contact with the skin.



Apply pressure on the bag to ensure fast adhesion and a perfect fit between the hydrocolloid and the skin around the stoma.

Remember to close the outlet before use if applicable.



(Ileostomy/urostomy bags)

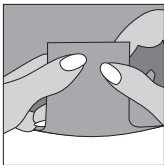
The outlet can be hidden in the pocket on the front to make it more comfortable and discreet.

The urostomy bag can be connected to an overnight drainage bag by using one of the adaptors supplied.

The narrow end of the adaptor is pushed into the outlet of the urostomy bag and the other end is connected to the night bag tube.

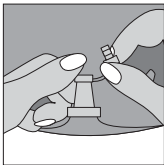
Rinse the adaptor with water following use and allow to dry.

Emptying/Drainage



Ileostomy bag

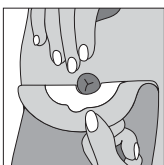
Hold the bag tail upwards & squeeze the outer end of the outlet. Drain the bag into a toilet. Clean the bag tail with water, dry & re-seal the bag tail. Continue to use.



Urostomy bag

Hold the plug upwards, pull out the plug & drain the bag into a toilet. Clean the plug with water, reseal the plug and continue to use.

Removal



Press the skin under the baseplate & gently remove the bag by peeling the edges of the baseplate.

Apply light pressure on your skin with your free hand to aid removal.

Disposal

The product is intended for single use only and should be disposed of with normal household waste. Do not flush the product down the toilet.